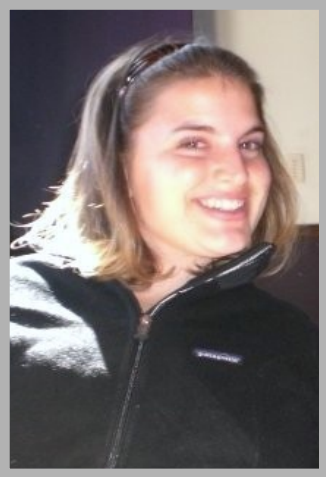


# A small step from you helps her step big into the future.



**Kelley Goddu, lived a very active life** prior to the tragic diving accident that changed her life forever when she was only 20 years old. While growing up in New Hampshire, Kelley enjoyed playing lacrosse, competitive swimming, & gourmet cooking. Kelley was attending Syracuse University as an environmental interior design major and had aspirations of becoming an interior designer. Following her accident in July 2006, she was hospitalized in critical condition for 3 weeks, then relocated to the Shepherd Center in Atlanta, GA for another three months.

**Kelley was diagnosed as level C4-C5 complete quadriplegic, and was told she would never walk again.**

To help with the cost of Kelley's *uninsured medical expenses and recovery based-therapies*, a fundraising campaign has been established in Kelley's honor with the *National Transplant Assistance Fund and Catastrophic Injury Program* (NTAF). NTAF is a nonprofit organization that has been assisting the transplant and spinal cord injury community for over 20 years. All contributions are administered by NTAF exclusively for Kelley for uninsured medically related expenses. 100% will be donated to her cause.

Won't you please consider helping Kelley realize her dream of an active life by contributing to her NTAF fundraising campaign.

**To contribute your tax deductible donation please visit:  
[www.transplantfund.org](http://www.transplantfund.org)  
and type in Goddu under "find a patient website"**



*Your tax-deductible donation  
is greatly appreciated.*



**National Transplant Assistance Fund  
& Catastrophic Injury Program**

Contributions are tax-deductable to the extent allowed by law. This campaign is administered by the National Transplant Assistance Fund, a 501(c)(3) nonprofit providing fundraising assistance to transplant and catastrophic injury patients. Information: 800.342.8399